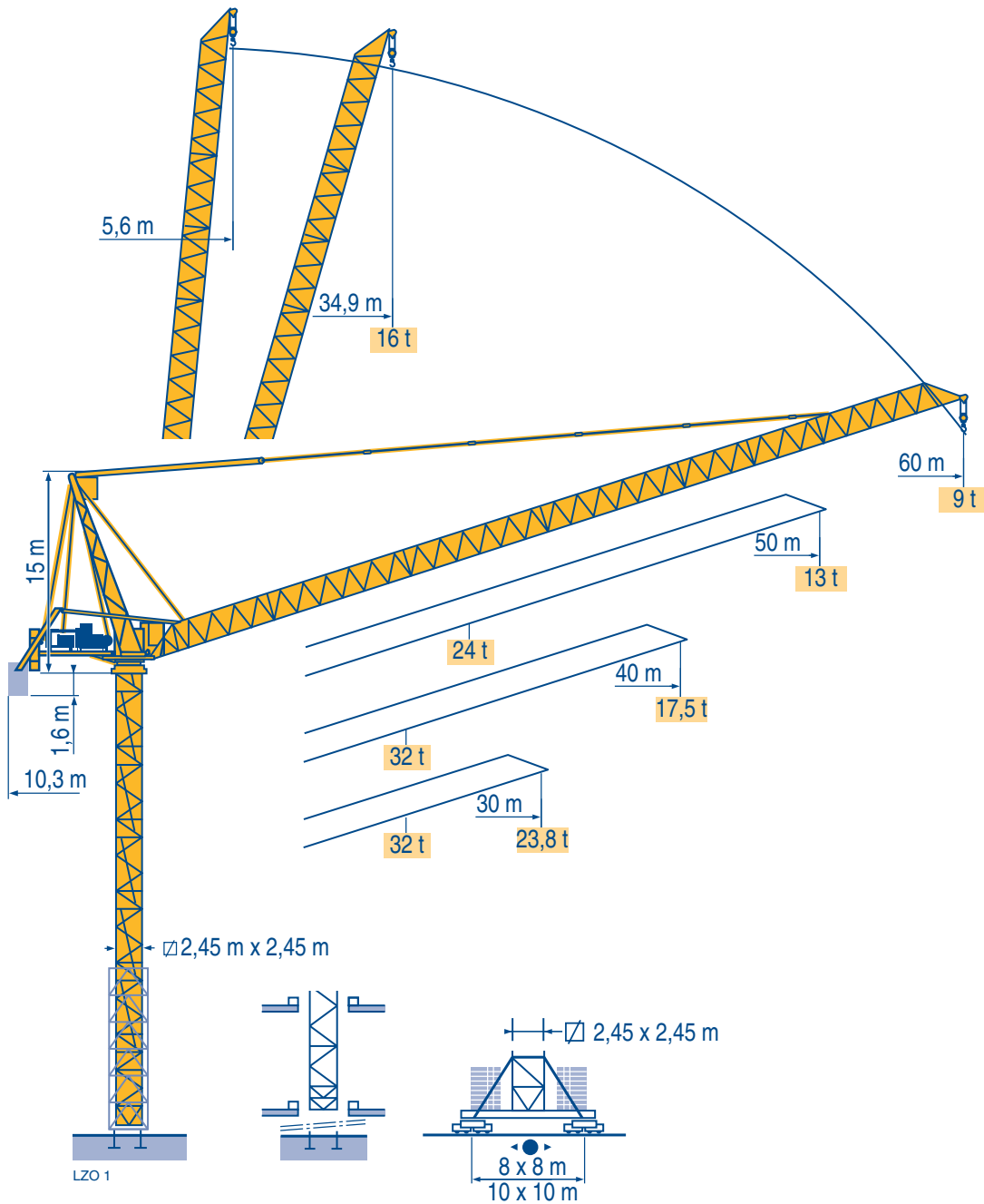
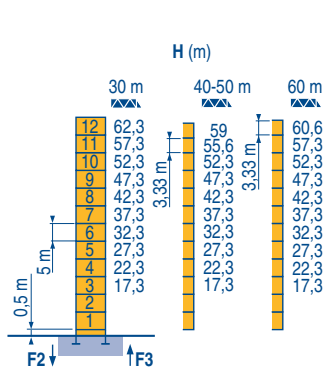


## MR 605 B H32

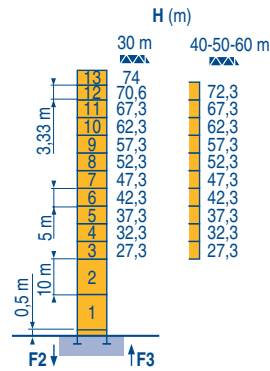


Mat / Réactions  $\square$  2,45 m  
 Maste / Eckdrücke  $\square$  30 m  $\Rightarrow$  60 m  
 Masts / Reactions  
 Mástil / Reacciones  
 Torre / Reazioni  
 Tramo / Reações

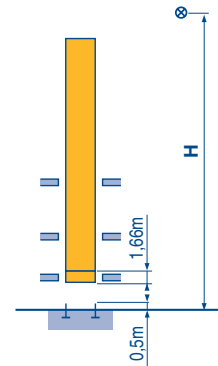
L201



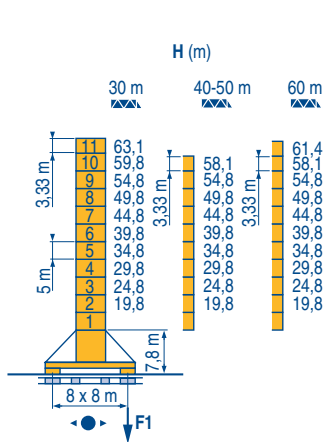
P 800 A	
F2	● 289 t
	■ 351 t
F3	● 199 t
	■ 259 t
	▲ 122 t



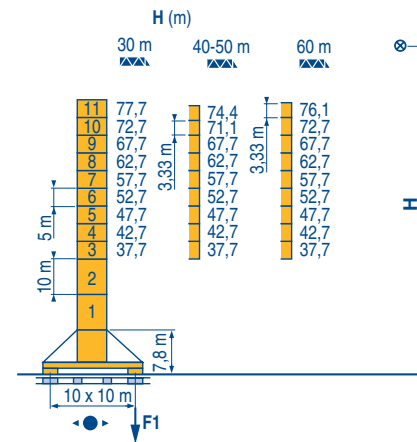
P 850 A	
F2	● 324 t
	■ 490 t
F3	● 228 t
	■ 392 t
	▲ 134 t



B 800 B	
	i



Y 800 A	
F1	● 195 t
	■ 182 t
	▲ 158 t



J 850 A	
F1	● 178 t
	■ 226 t
	▲ 185 t

MR 605 B H32



F	D	GB	E	I	P
●	●	●	●	●	●
■	■	■	■	■	■
▲	▲	▲	▲	▲	▲
i	i	i	i	i	i
Réactions en service	Reaktionskräfte in Betrieb	Reactions in service	Reacciones en servicio	Reazioni in servizio	Reações em serviço
Réactions hors service	Reaktionskräfte außer Betrieb	Reactions out of service	Reacciones fuera de servicio	Reazioni fuori servizio	Reações fora de serviço
A vide sans lest (ni train de transport) avec flèche et hauteur maximum.	Ohne Last, Ballast (und Transportachse), mit Maximalausleger und Maximalhöhe.	Without load, ballast (or transport axles), with maximum jib and maximum height.	Sin carga, sin lastre, (ni tren de transporte), flecha y altura máxima.	A vuoto, senza zavorra (ne assali di trasporto) con braccio massimo e altezza massima.	Sem carga (nem trem de transporte)- sem lastro com lança e altura máximas.
Nous consulter	Auf Anfrage	Consult us	Consultarnos	Consultateci	Consultar-nos



Mécanismes  
Antriebe  
Mechanisms  
Mecanismos  
Meccanismi  
Mecanismos

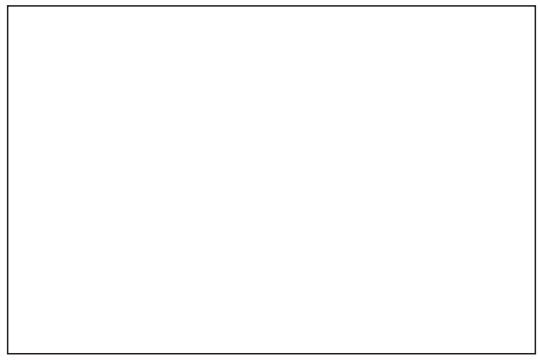
LZO1

MR 605 B H32 50 Hz											ch - PS hp	kW	
	180 LBR 80	m/min	3,8/38	6/60	9,5/95	15,2/152	1,9/19	3/30	4,75/47,5	7,6/76	180	132	1090 m
	L 1090	t	16	10,1	5,9	3,25	32	20,2	11,8	6,5			
	90 VBR		3 min 17 s								90	66	
	R - 13,2	tr/min U/min rpm	0 → 0,67								3 x 6	3 x 4,4	
	Y 800 A J 850 A	m/min											
CEI 38		IEC 38	kVA										
400 V (+6% -10%) 50 Hz		270 kVA				2000 / 14							

MR 605 B H32 60 Hz											ch - PS hp	kW	
	215 LBR 80	m/min	4,6/46	7,2/72	11,4/114	18,2/182	2,3/23	3,6/36	5,7/57	9,1/91	215	158	1090 m
	L 1090	t	16	10,1	5,9	3,25	32	20,2	11,8	6,5			
	108 VBR		2 min 44 s								108	79	
	R - 15,8	tr/min U/min rpm	0 → 0,8								3 x 7,2	3 x 5,3	
	Y 800 A J 850 A	m/min											
CEI 38		IEC 38	kVA										
480 V (+6% -10%) 60 Hz		325 kVA				2000 / 14							

	F	D	GB	E	I	P
	Levage	Heben	Hoisting	Elevación	Sollevamento	Elevação
	Relevage	Ausleger-Einziehen	Luffing	Elevación de flecha	Brandeggio	Inclinação da lança
	Orientation	Schwenken	Slewing	Orientación	Rotazione	Rotação
	Translation	Kranfahren	Travelling	Traslación	Traslazione	Traslção
	Conforme aux directives CEE sur le niveau acoustique	Gemäss EWG-Richtlinien für den Schall-Leistungspegel	In compliance with the EEC Instructions on noise level	Conforme con las directivas CEE sobre el nivel acustico	Conforme alle direttive CEE sul livello acustico	Conforme as directivas CEE sobre o nível acústico

	Document commercial non contractuel. Pour toute information technique se référer à la notice correspondante	Unverbindliches Vertriebsdokument. Für technische Informationen, siehe die entsprechenden Anweisungen.	This commercial document is not legally binding. For any technical information, please refer to the corresponding instructions.	Documento comercial no contractual. Para cualquier información técnica, ver la noticia correspondiente.	Documento commerciale non vincolante, per tutte le informazioni tecniche fare riferimento al catalogo istruzioni	Documento comercial não contractual. Para qualquer informação técnica complementar consultar as respectivas instruções
--	---	--	---	---	--	--



**Americas**  
Tel : +1 920 683 6322  
Tel : +1 717 597 8121

**Europe - Middle East - Africa**  
Tel : +(33) 4 72 81 50 00  
Tel : +(44) 191 565 6281

**Asia - Pacific**  
Tel : +(65) 6861 7133  
Fax : +(65) 6862 4142

www.manitowoccrane.com

**18, rue de Charbonnières - B.P.173  
69132 ECULLY Cedex - France**

Tél. : (33) 4 72 18 20 20  
Fax. : (33) 4 72 18 20 00  
www.manitowoccrane.com www.potain.com

**MR 605 B H32**  
Réf. 2003 48 LZO 1

Copyright.Reproduction interdite © POTAIN 2003

Réalisation HeadLines